

# Haglof Management Systems with TCruise Suite Setup

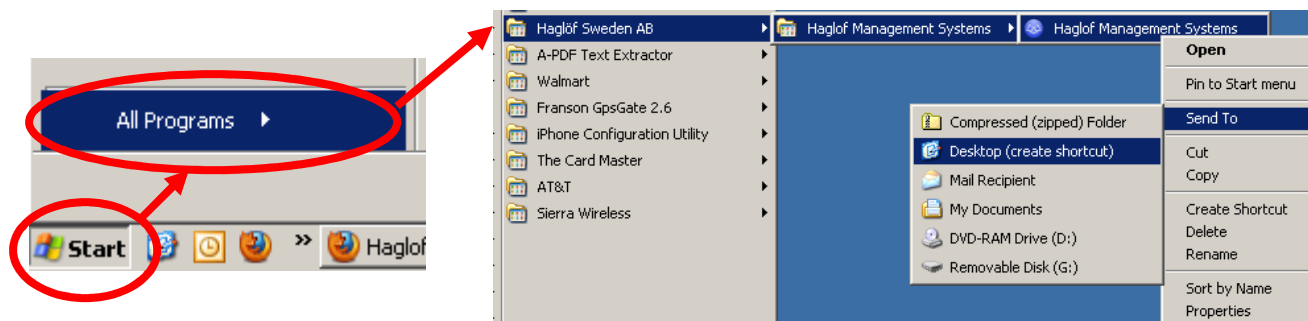


## Opening HMS

After all installs have finished. Open HMS by selecting the icon from your desktop or use the shortcut in your Start menu under Haglof Sweden AB.

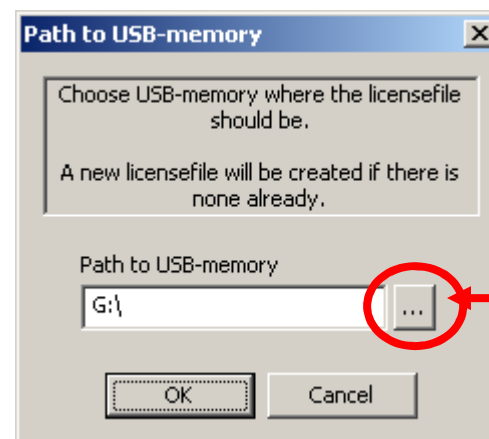
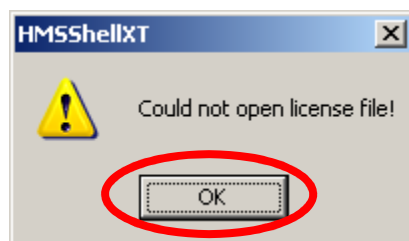


If you don't have desktop shortcut you can create one by selecting Start > Programs > Haglof Sweden AB > Haglof Management Systems and right clicking on Haglof Management Systems and selecting Send to > Desktop (create shortcut).



## HMS Licensing/Registration via USB Key

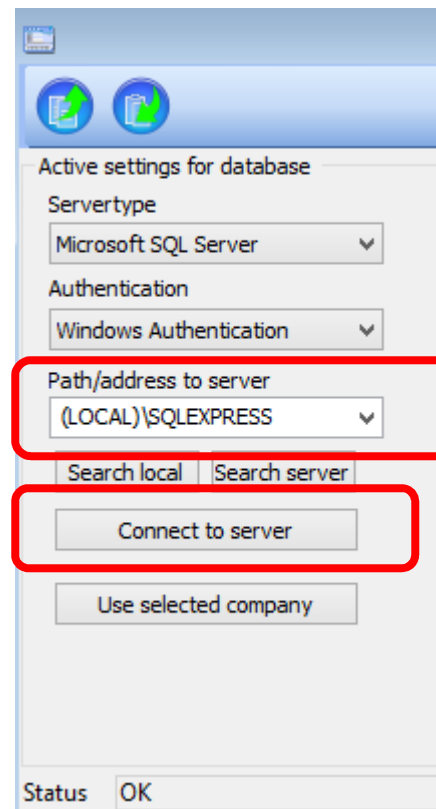
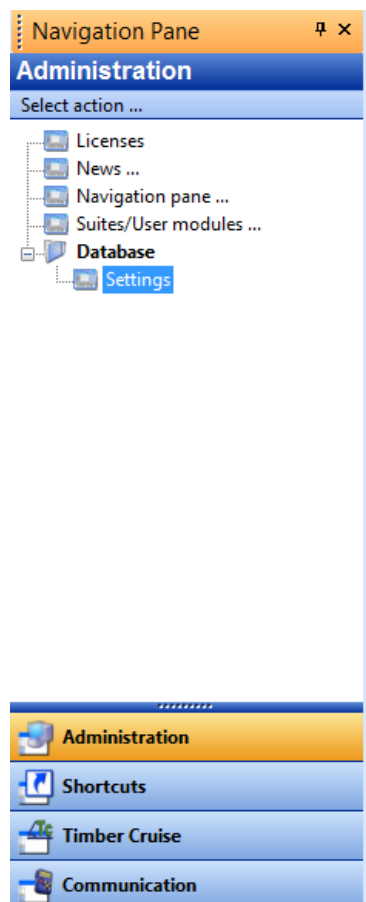
Upon opening HMS the user will be prompted if license file is no found on the USB key. Pressing OK will allow the user to navigate to the location of the license key. The program will continue to open once this is completed. Users may install HMS on as many PC's as desired, but the program will only open if the USB license key is inserted into the computer.



Click here top browse for license file. Select the appropriate drive and press OK.

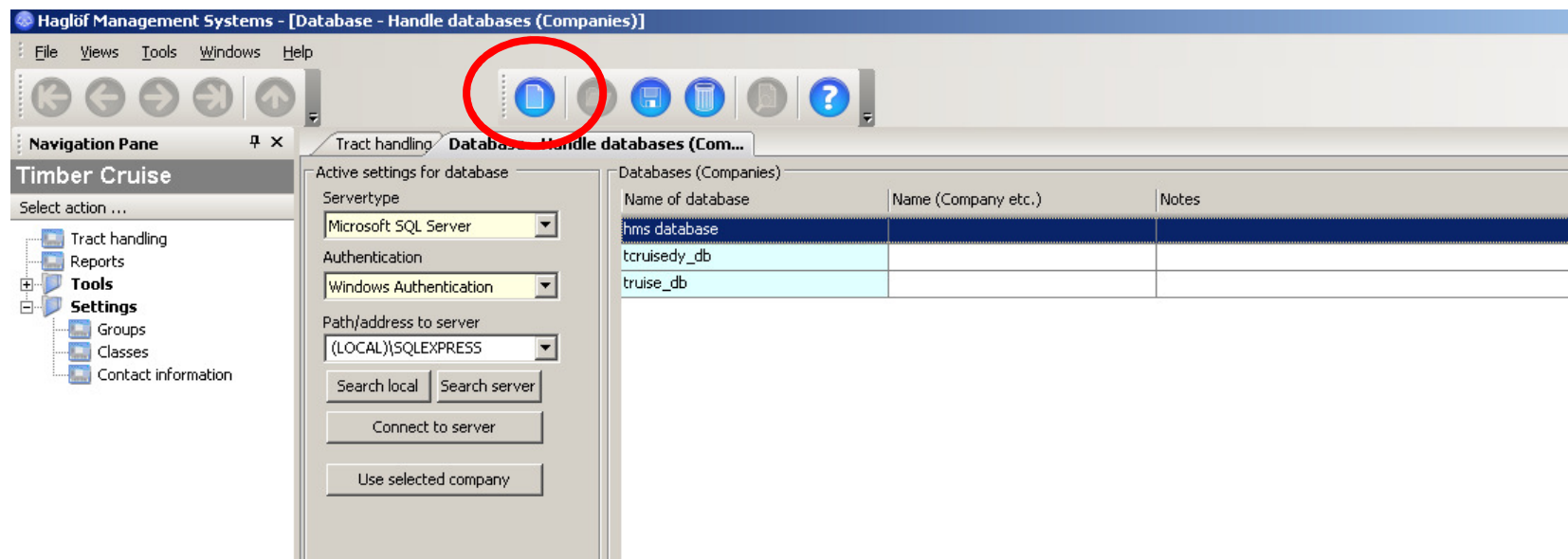
## HMS Connect to Database

HMS will alert the user if there is no connection to a database. While on the Administration tab, click Database > Settings. In the Path\address to server, type in (LOCAL)\SQLEXPRESS and press the Connect to Server button. This should return a message "Connection to server OK".



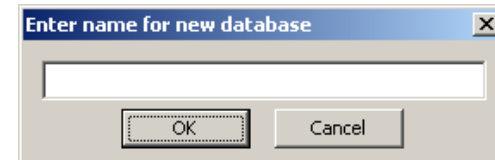
## HMS Initial Setup

1. Create a new SQL database to hold your cruise data. You can setup multiple databases if you'd like, maybe one for each of your clients. To begin select the Tools menu > Database > Settings. Click the New button on the toolbar (or press F3) to create the new database as in the pic below. You may also delete old or unused databases using the Delete (trashcan) button.

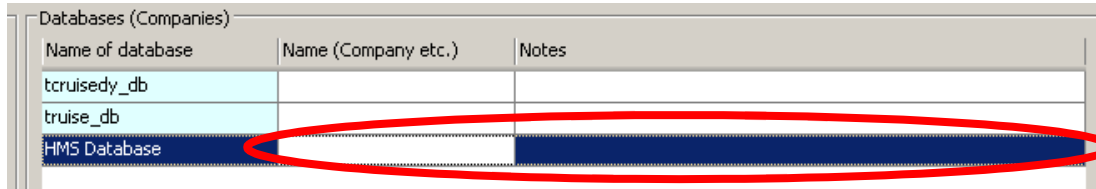


## HMS Initial Setup Cont.

2. Type in the name of your new database and press OK.



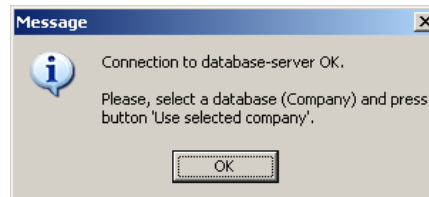
3. You may also choose to type in a name and description in the adjoining fields.



4. Save the database by clicking the Save button on the toolbar.

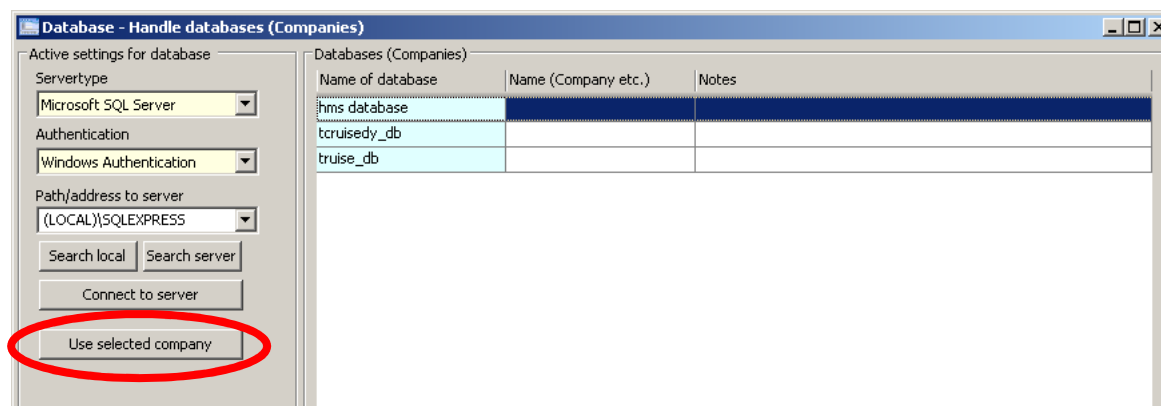


5. Select the row with your new database or the database you intend to use and press the "Connect to Server" button to test it. You should see a message popup verifying that the connection is OK.



## HMS Initial Setup Cont.

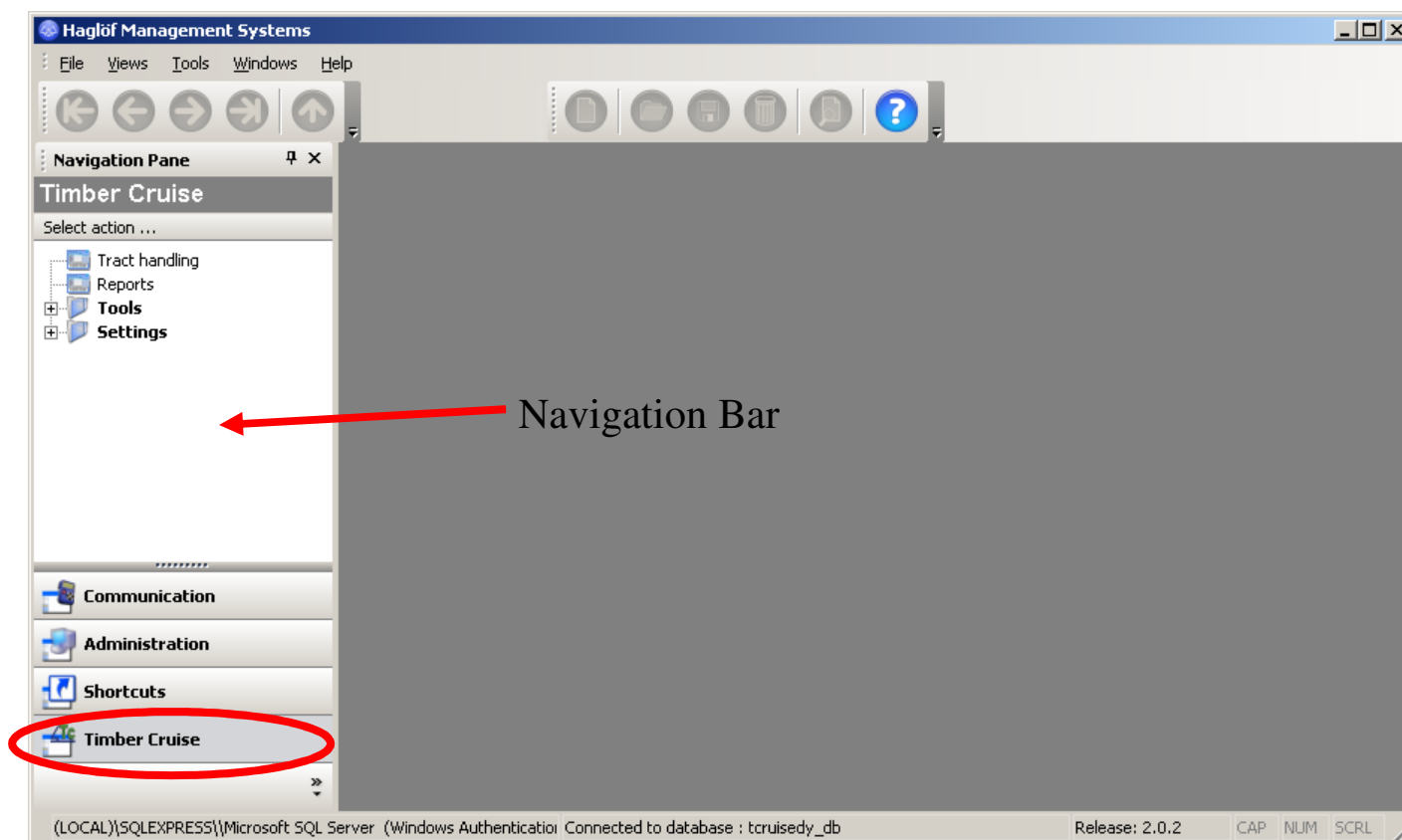
6. Last, make sure the row with the desired database is still selected and press the “Use Selected Database” button.



You are now ready to use HMS. Next, it is time to setup TCruise to work with HMS.

## TCruise Initial Setup for HMS

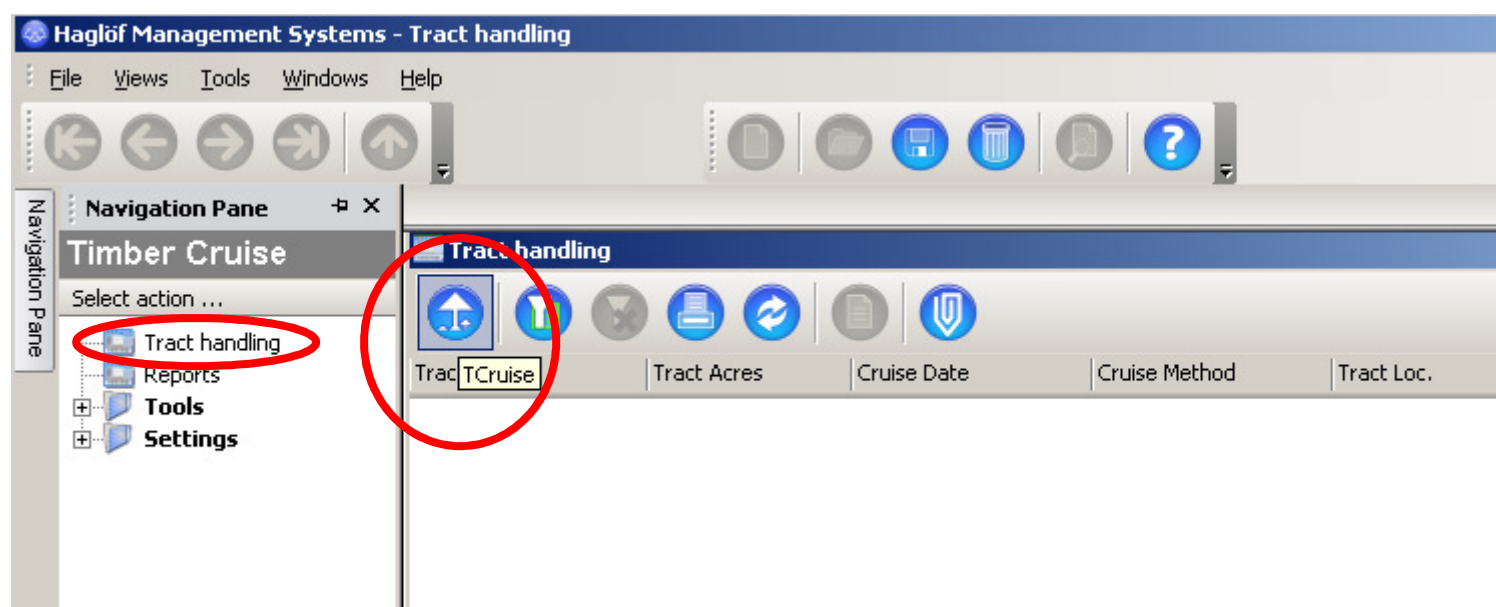
As you can see from the diagram below, HMS is a shell type application that resemble Microsoft Outlook. To access TCruise from HMS simply click the Timber Cruise from the vertical bar called the Navigation Bar.





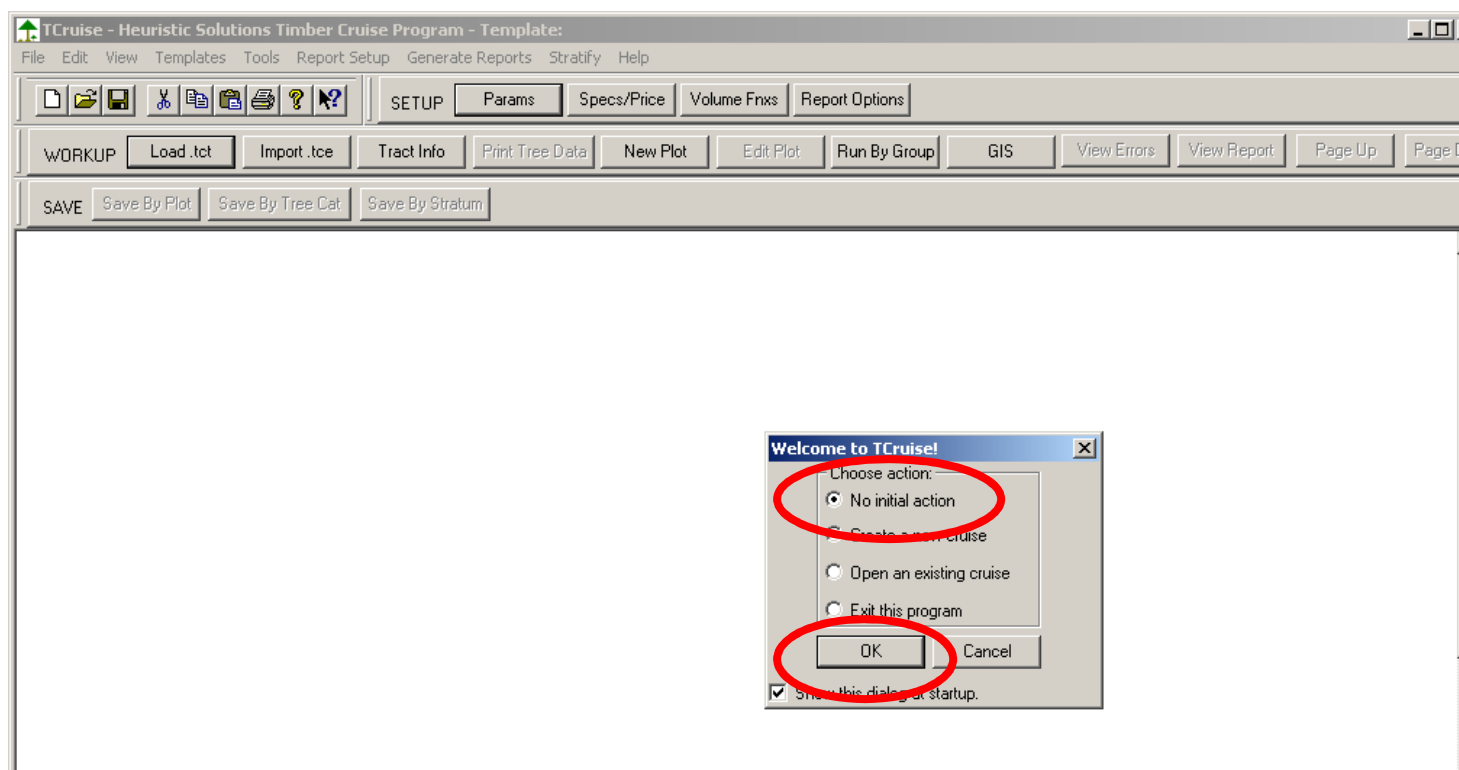
## TCruise Initial Setup for HMS

Next select Tract Handling and you will see the TCruise Icon on the toolbar. Dbl click the TCruise icon to launch the program. You can also launch TCruise from a desktop shortcut.



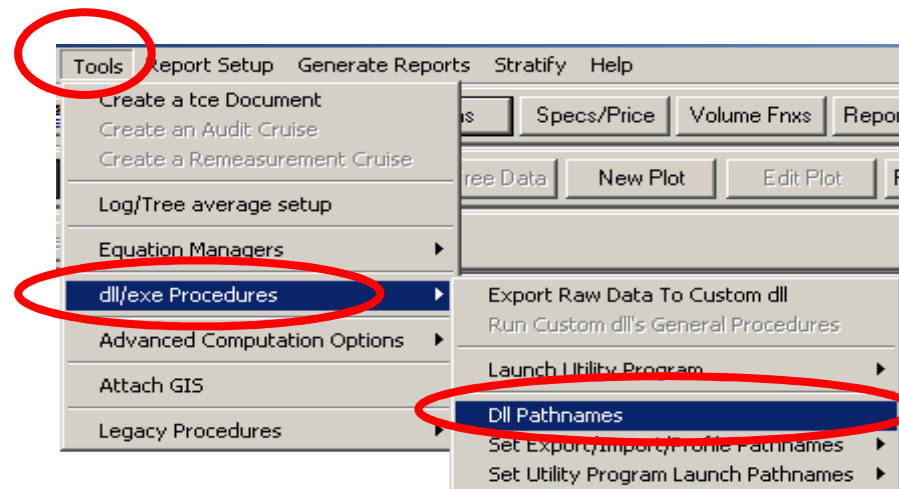
## TCruise Initial Setup for HMS

After TCruise has opened you can select No initial action from the startup dialog window and press OK. You may want to maximize the TCruise window at this point to utilize your entire PC screen as TCruise has some large internal windows.



## TCruise Initial Setup for HMS

The main setup item for TCruise to work with HMS is enabling the dll to allow TCruise to create the SQL database for HMS. Make sure you have the proper dll path by selecting the Tools menu > dll/exe procedures > Dll pathnames.

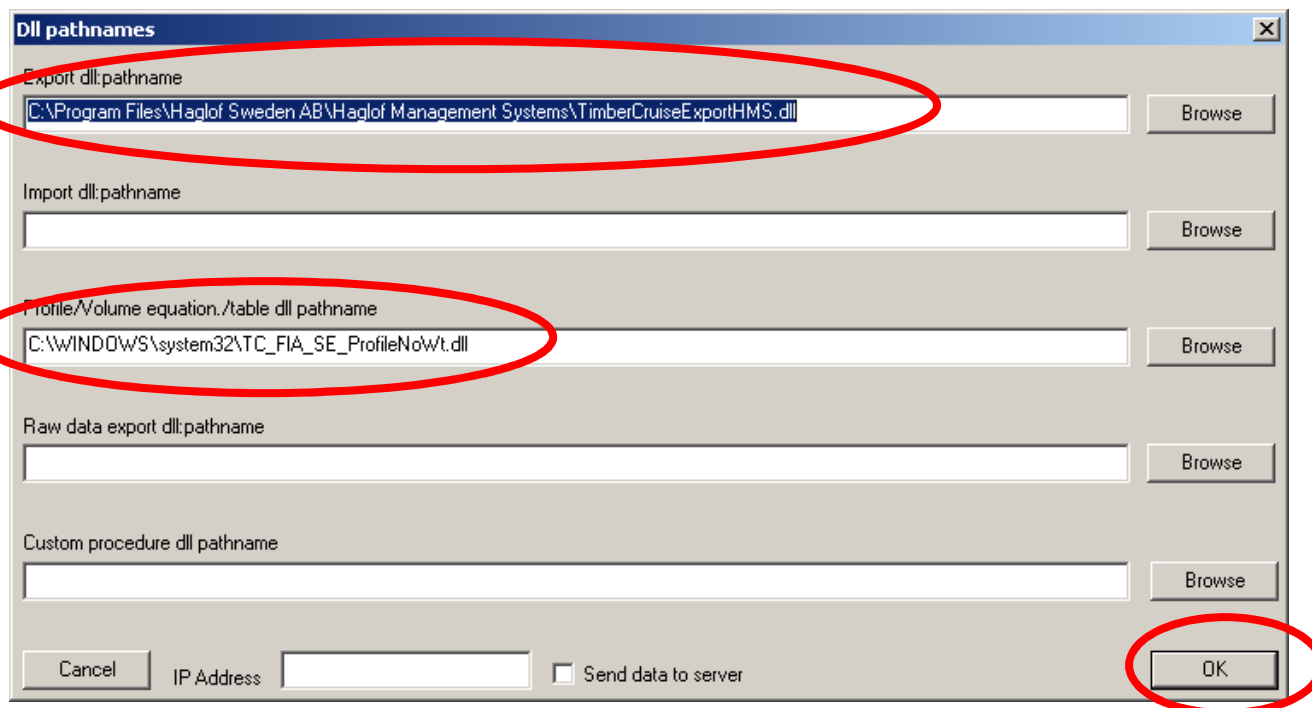


## TCruise Initial Setup for HMS

Check the export dll pathname and be sure it is set to the path shown here which is: C:\Program Files\Haglof Sweden AB\Haglof Management Systems\TimberCruiseExportHMS.dll. If it is not click the Browse button and navigate to that folder location and select the dll.

You may also want to select the Profile/Volume equation/table dll pathname as shown below as it allows the user access to all 369 available volume functions in TCruise.

Press OK when you are done.

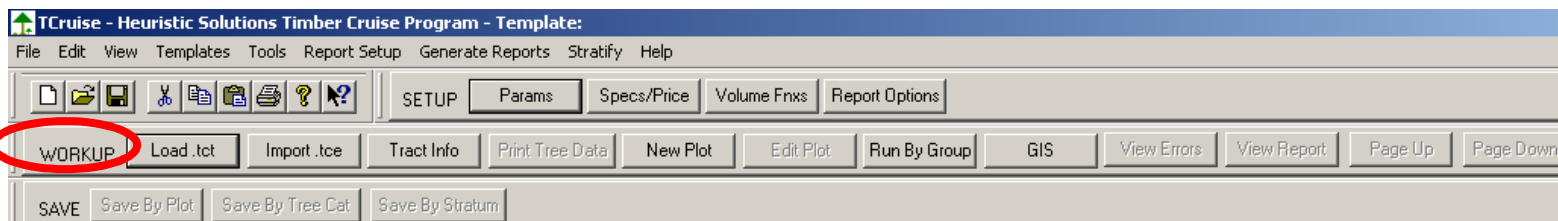


The screenshot shows the 'Dll pathnames' dialog box with the following fields and buttons:

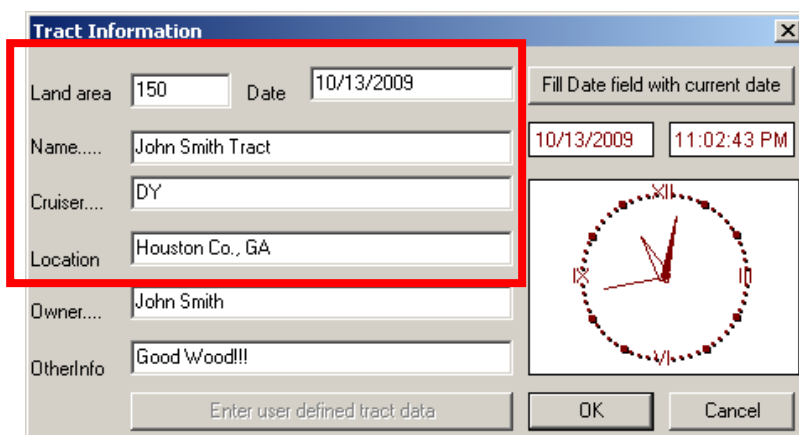
- Export dll:pathname**: C:\Program Files\Haglof Sweden AB\Haglof Management Systems\TimberCruiseExportHMS.dll (highlighted with a red circle)
- Import dll:pathname**: (empty field)
- Profile/Volume equation./table dll pathname**: C:\WINDOWS\system32\TC\_FIA\_SE\_ProfileNowt.dll (highlighted with a red circle)
- Raw data export dll:pathname**: (empty field)
- Custom procedure dll pathname**: (empty field)
- Buttons**: Cancel, IP Address (with a text box), ☐ Send data to server, and OK (highlighted with a red circle)

## Cruise Workup

Cruise workup with HMS follows the same basic steps as a normal TCruise run. If you already have a completed tcd file simply open it and press RunByGroup. If you have field data that has not been processed yet use the Workup toolbar to guide you thru the process. See chapter 2 for more details on cruise workup.



**!!!!!!** It is critical that the user input the following details in the Tract Information dialog box as HMS will need these to create the new record in the SQL database.



The screenshot shows the "Tract Information" dialog box. The fields "Land area", "Name", "Cruiser", and "Location" are highlighted with a red box. The "Land area" field contains the value "150". The "Name" field contains the value "John Smith Tract". The "Cruiser" field contains the value "DY". The "Location" field contains the value "Houston Co., GA". Other fields include "Date" (10/13/2009), "Owner" (John Smith), and "OtherInfo" (Good Wood!!!). There is a "Fill Date field with current date" button and a clock icon. At the bottom are buttons for "Enter user defined tract data", "OK", and "Cancel".

Land Area (Acreage)

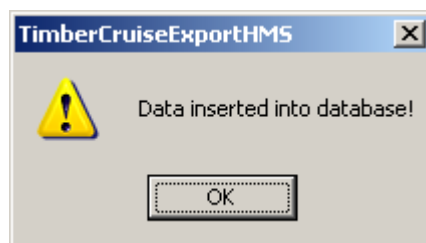
Tract Name

Cruiser

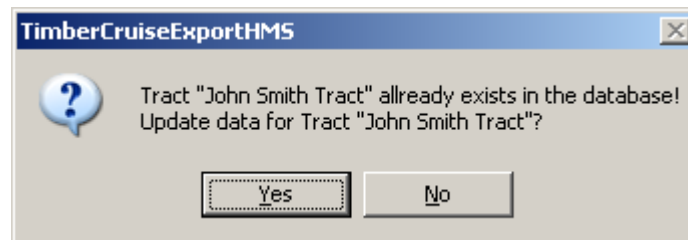
Location

## Cruise Workup & Generating SQL Database for HMS

After selecting RunByGroups and saving the cruise as a TCruise document (.tcd) the user will be prompted with the following dialog:



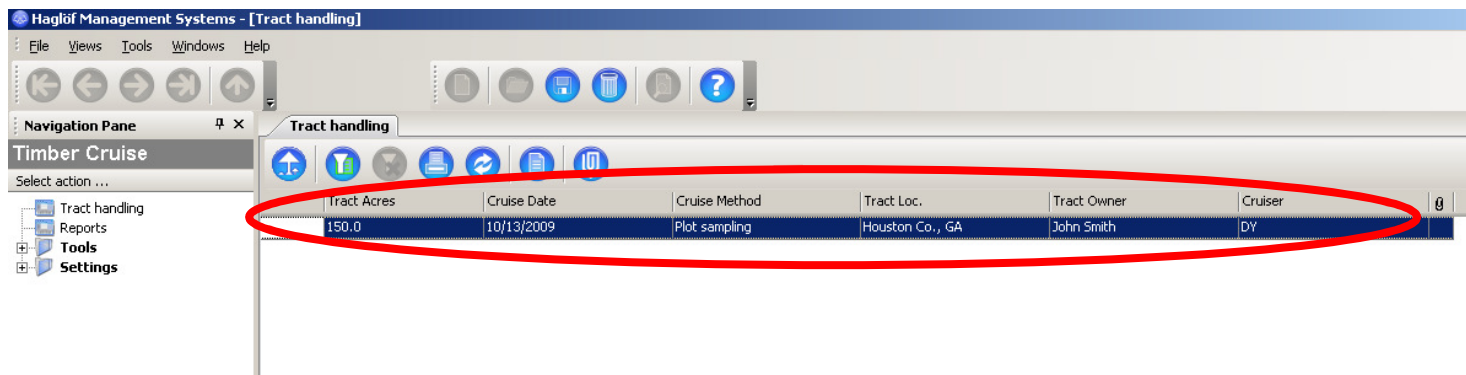
If this cruise has already been run before TCruise this dialog will pop-up to allow the user to decide if he/she wants to allow the database to be replaced.



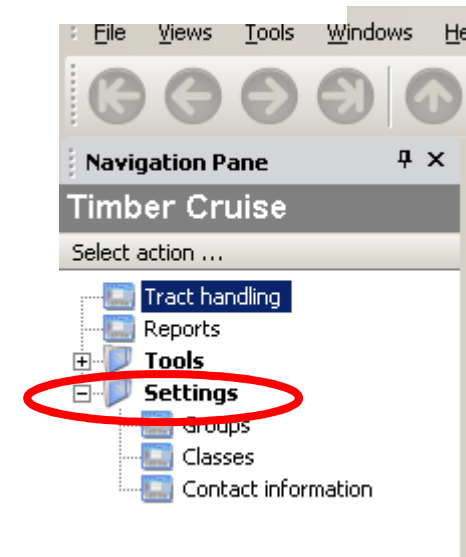
After the cruise data is inserted into the database the user can open up the HMS shell to generate reports.

## HMS Report Setup

Now back in HMS I can see that my data was inserted into the database. Notice that the Tract Information was automatically input into the Tract Handling tab.

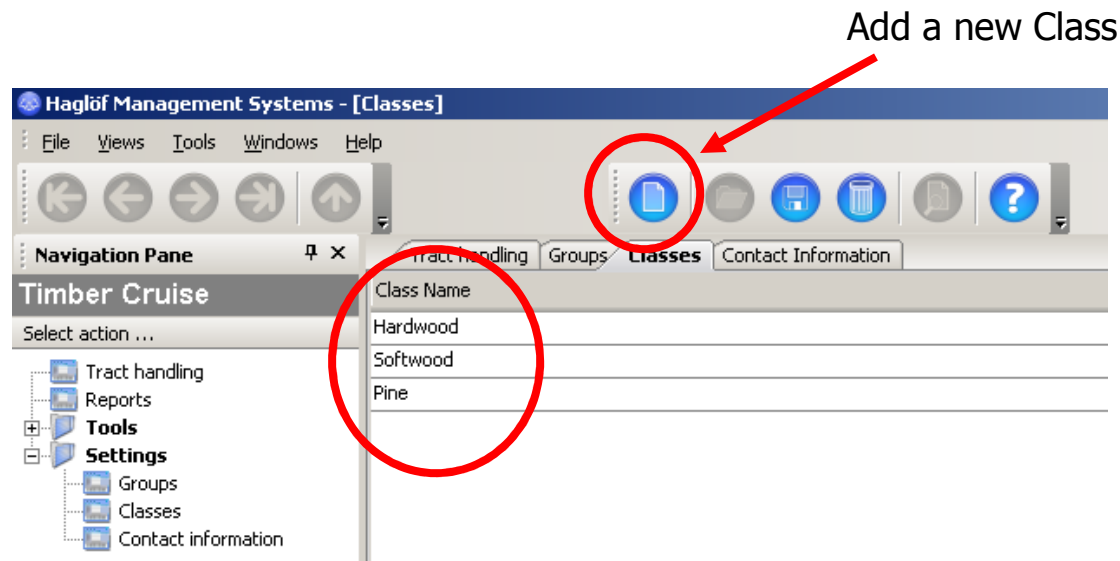


Next we will need to expand the options in Settings to Setup Classes, Assign Groups To Classes, and specify Contact Info for the Report Header.



## HMS Report Setup – Defining Classes

Click on Classes first to be sure the default classes will suffice for your needs.

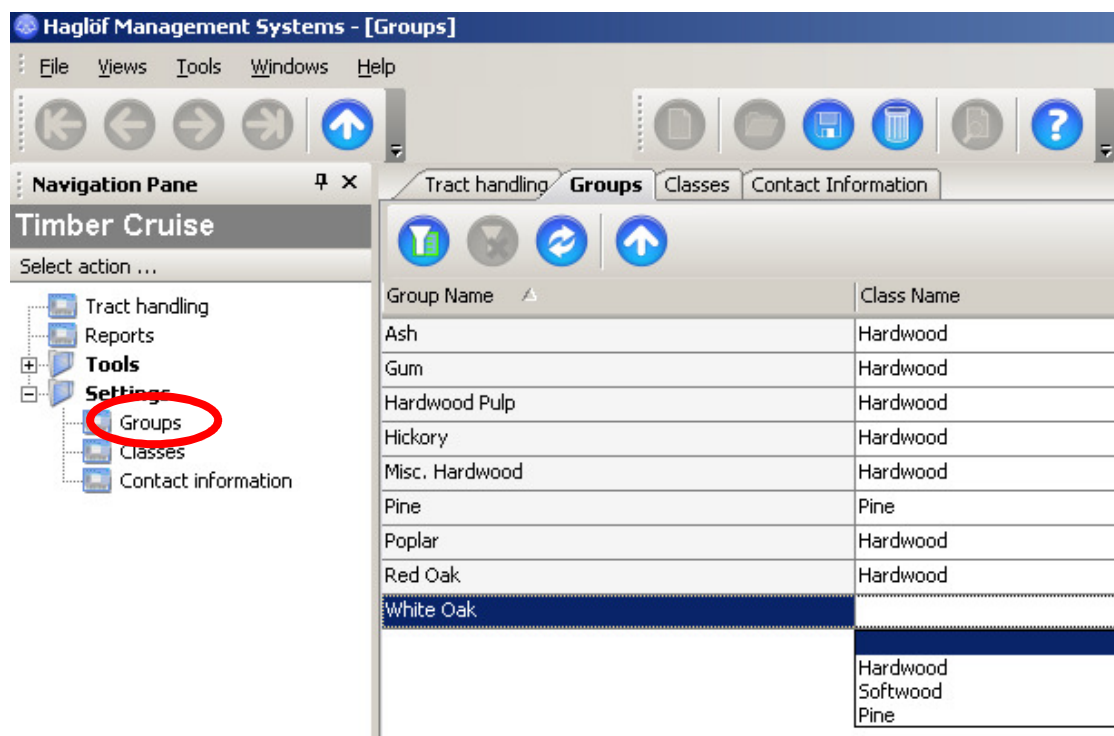


These classes will allow HMS to summarize species groups by class. The defaults are Pine, Hardwood, and Softwood. If you need another class you may simply click the New button on the toolbar and input your new Group such as Cypress. You can also delete unused classes using the Delete (trashcan) button.



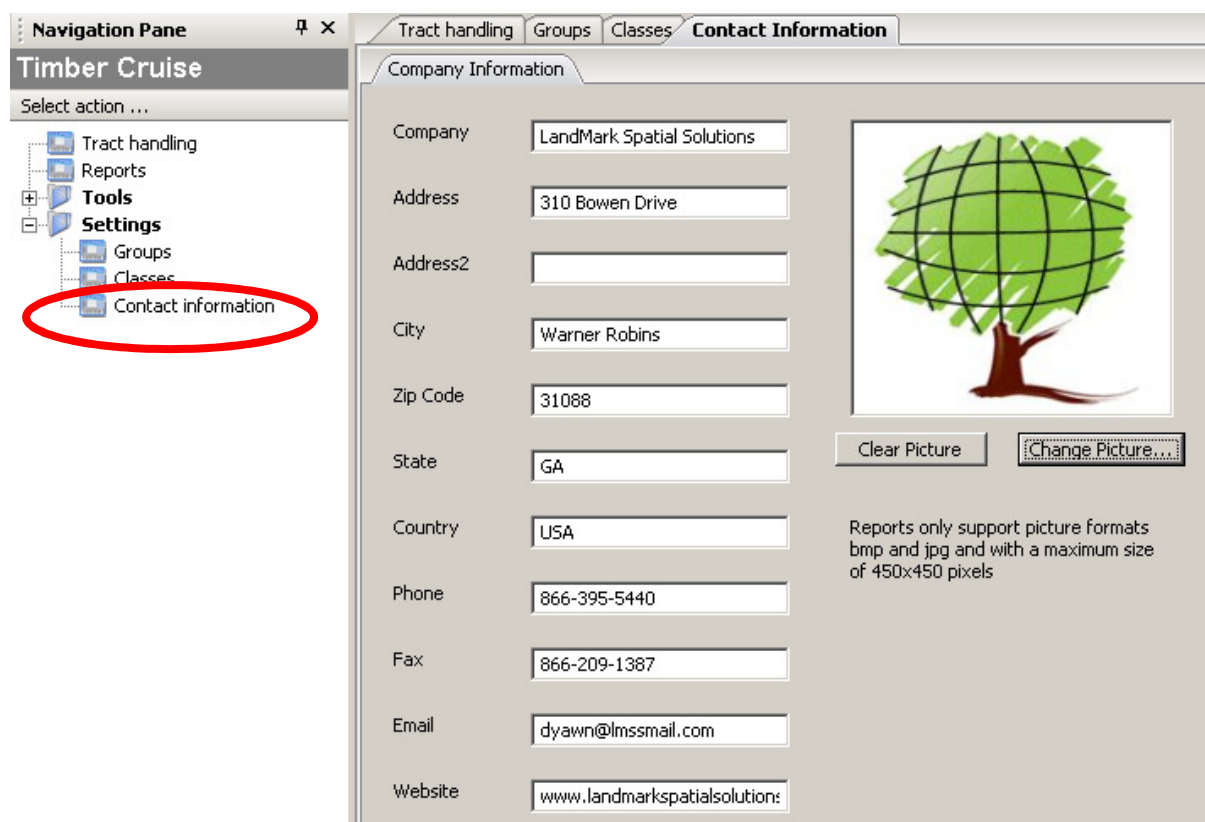
## HMS Report Setup – Assigning Species Groups to Classes



To begin the next step of assigning species groups to classes simply click Groups underneath Settings. Here you will need to go down the species group list and assign each species to the appropriate Group using the drop-down picklist as shown below. If you always use the same template you may only have to assign species once but it is recommended that you do verify all species have been assigned before generating any reports.



## HMS Report Setup – Contact Info

Lastly you will need to input your company's contact info to be used in the report header. Simply click on Contact Info beneath Settings and input your info. You can also upload your company logo. Press the Save button when you are done.



**Navigation Pane**  

**Timber Cruise**


Select action ...


- Tract handling
- Reports
- Tools**
- Settings**
  - Groups
  - Classes
  - Contact information**

**Contact Information**

**Company Information**

Company	LandMark Spatial Solutions
Address	310 Bowen Drive
Address2	
City	Warner Robins
Zip Code	31088
State	GA
Country	USA
Phone	866-395-5440
Fax	866-209-1387
Email	dyawn@lmssmail.com
Website	www.landmarkspatialsolution:



Clear Picture 

Reports only support picture formats bmp and jpg and with a maximum size of 450x450 pixels

## HMS Reports

Now with the setup complete we can view some reports. Click on Reports in the Navigation pane and you should see a list of available reports with a description of each. Pick one to output by dbf clicking on it. The reports with SQL input under comments are built with SQL queries and will run faster.

**Navigation Pane**  
**Timber Cruise**  
 Select action ...  
 Tract handling  
**Reports**  
 Settings

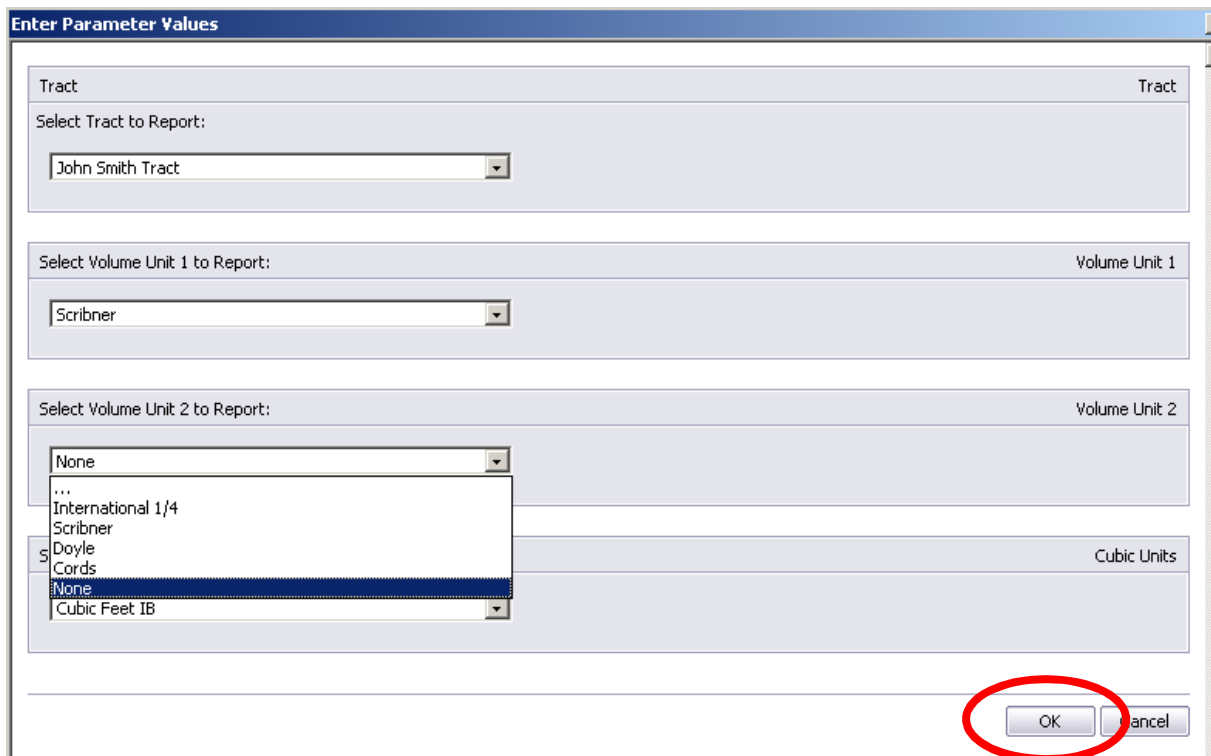
Tract handling Groups Classes Contact Information **Reports**

File name	Title	Subject	Comments	Keywords	Author	Created
16Ft Log Merch Ht Stand Table	16 Ft. Log Merchantable Height Stand Table		16 Ft. Merch Ht Stand Table for volume function/table merch ht cruises only	Merchantable Height, Stand Table	Brian Stiber	06/24/2009
Cruiser	Cruiser Report		Cruiser Report	Cruiser, Plot	Brian Stiber	06/24/2009
DetailedSummary	Detailed Summary Report		SQL	Detailed, Summary	Brian Stiber	06/24/2009
GradeGroup	Grade by Class/Group Report		SQL	Grade, Class, Group	Brian Stiber	06/24/2009
GradeGroupProd	Grade by Class/Group/Product Report		SQL	Grade, Class, Group, Product	Brian Stiber	06/24/2009
NonStratifiedStatistics	Non Stratified Statistics		SQL	Non Stratified, Statistics	Brian Stiber	06/24/2009
NonStratifiedValue	Non Stratified Value		SQL	Non Stratified, Value, Class, Group, Product	Brian Stiber	06/24/2009
NonStratifiedValueStatistics	Non Stratified Value Statistics		SQL	Non Stratified, Value, Statistics	Brian Stiber	06/24/2009
StrataCombinedSummaryClass	Combined Strata Summary Report By Class/Group/Product		SQL	Strata, Combined, Summary, Class, Group, Product	Brian Stiber	06/24/2009
Stratified Summary By Class Group Product	Stratified Summary Report By Class/Group/Product		SQL	Strata, Summary, Class, Group, Product	Brian Stiber	06/24/2009
StratifiedStatistics	Stratified Statistics		SQL	Stratified, Statistics	Brian Stiber	06/24/2009
StratifiedSummaryClassGroupF	Stratified Summary Report By Class/Group/Product		SQL	Strata, Summary, Class, Group, Product	Brian Stiber	06/24/2009
StratifiedValue	Stratified Value		SQL	Stratified, Value, Class, Group, Product	Brian Stiber	06/24/2009
StratifiedValueStatistics	Stratified Value Statistics		SQL	Stratified, Value, Statistics	Brian Stiber	06/24/2009
Summary Class Group Product By DBH	Summary By Class/Group/Product/DBH		SQL	Summary, Class, Group, Product, DBH	Brian Stiber	06/24/2009
SummaryClassGroupProd	Summary Report By Class/Group/Product		SQL	Summary, Class, Group, Product	Brian Stiber	06/24/2009
SummaryClassGroupProdDBH	Summary Report By Class/Group/Product/DBH		SQL	Summary, Class, Group, Product, DBH	Brian Stiber	06/24/2009
SummaryClassProd	Summary Report By Class/Product		SQL	Summary, Class, Product	Brian Stiber	06/24/2009
Tree Category ReportA	Tree Category A Report		Summary Report By Tree Category A/ Class/Group/Product	Tree, Category A, Summary, Class, Group, Product	Brian Stiber	06/24/2009
Tree Category ReportAR	Tree Category A R Report		Summary Report By Tree	Tree, Category, Summary	Brian Stiber	06/24/2009

Communication  
 Administration  
 Shortcuts  
**Timber Cruise**

## HMS Reports

The example below is from the Detailed Summary Report. You will be required to pick the tract from which you would like a report generated as well as what the desired volume units to report. Note that **Tons are output by default on all reports** but the user is allowed to pick any other volume variables desired. Press OK after selections are made. You will be prompted to enter parameters every time a report is ran.



**Enter Parameter Values**

Tract

Select Tract to Report:

John Smith Tract

Select Volume Unit 1 to Report:

Scribner

Select Volume Unit 2 to Report:

None  
...  
International 1/4  
Scribner  
Doyle  
Cords  
None  
Cubic Feet IB

Cubic Units

OK Cancel


## HMS Reports

Finally the report is output. At this point you may Print the report, Export it to PDF, RTF, or Excel, email it, or resize it using the buttons on the toolbar. Notice how the report uses the Pine and Hardwood classes we setup earlier.

Tract handling Groups Classes Contact Information Reports **Report - [Detailed Summary Report]**

75%

Main Report



**LandMark Spatial Soluti**  
 310 Bowen Drive,  
 Warner Robins, GA 31088  
 USA

Phone: 866-395-5440  
 Fax: 866-209-1387  
 Email: dyawn@lmssmail.com  
 Website: www.landmarkspatialolutions.com

### Detailed Summary Report

Tract: John Smith Tract  
 Cruise: DY  
 Location: Houston Co., GA  
 Owner: John Smith  
 Cruise Date: 10/13/2009

Total Acres: 150.00  
 Number of Plots: 71  
 Cruise Method: Plot  
 Plot Size/BAF: 0.10

#### Pine

Product	Total Tract						Per Acre						Average Tree		
	Trees	Tons	SMBF	DMBF	Cu. Ft. IB	BA	Trees	Tons	SMBF	DMBF	Cu. Ft. IB	SL CFT/FT	DBH	MerchHt	
<b>Pine</b>															
Sawlog	4,732	6,950	1,107	864	191,447	49.8	32	46.3	7.378	5.762	1,276.3	0.92	16.6	44.1	
Chip/Saw	1,204	446	51	34	12,291	4.4	8	3.0	0.338	0.226	81.9	0.34	10.0	29.8	
Pulpwood	3,423	1,219	0	0	31,825	8.7	23	8.1	0.000	0.000	212.2	0.00	8.0	52.8	
Topwood	0	1,929	0	0	54,516	0.0	0	12.9	0.0	0.000	363.4	0.00	0.0	0.0	
<b>Group Total</b>	<b>9,359</b>	<b>10,545</b>	<b>1,157</b>	<b>898</b>	<b>290,078</b>	<b>62.9</b>	<b>62</b>	<b>70.3</b>	<b>7.716</b>	<b>5.987</b>	<b>1,933.9</b>	<b>0.83</b>	<b>12.6</b>	<b>45.1</b>	
<b>Class Total</b>	<b>9,359</b>	<b>10,545</b>	<b>1,157</b>	<b>898</b>	<b>290,078</b>	<b>62.9</b>	<b>62</b>	<b>70.3</b>	<b>7.716</b>	<b>5.987</b>	<b>1,933.9</b>	<b>0.83</b>	<b>12.6</b>	<b>45.1</b>	

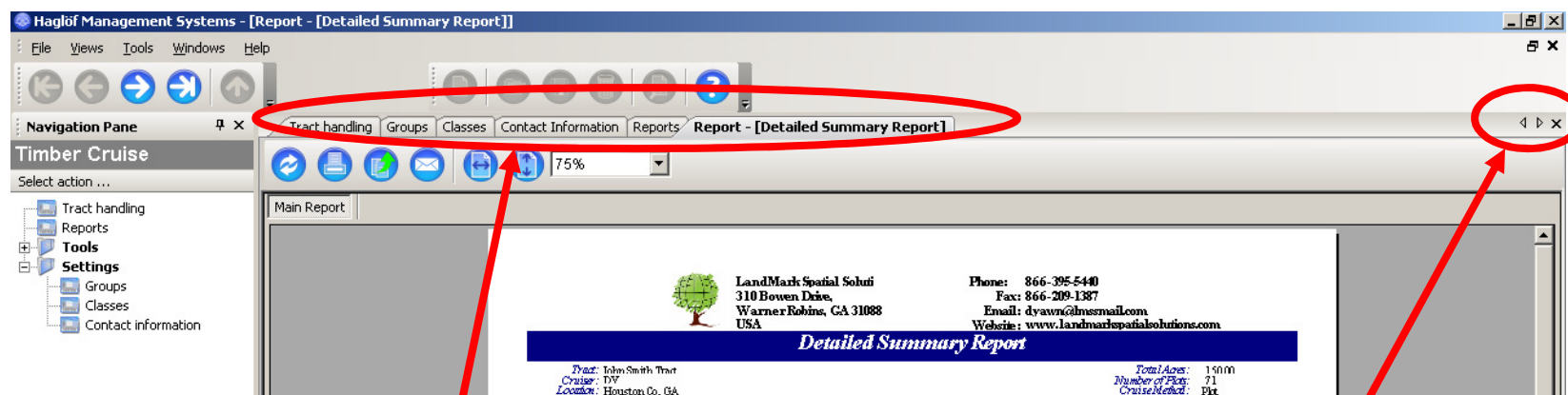
#### Hardwood

Product	Total Tract						Per Acre						Average Tree		
	Trees	Tons	SMBF	DMBF	Cu. Ft. IB	BA	Trees	Tons	SMBF	DMBF	Cu. Ft. IB	SL CFT/FT	DBH	MerchHt	
<b>Ash</b>															
Sawlog	42	31	6	5	1,027	0.5	0	0.2	0.041	0.033	6.8	1.19	17.0	20.5	
Topwood	0	27	0	0	762	0.0	0	0.2	0.0	0.000	5.1	0.00	0.0	0.0	
<b>Group Total</b>	<b>42</b>	<b>58</b>	<b>6</b>	<b>5</b>	<b>1,789</b>	<b>0.5</b>	<b>0</b>	<b>0.4</b>	<b>0.041</b>	<b>0.033</b>	<b>11.9</b>	<b>1.19</b>	<b>17.0</b>	<b>20.5</b>	
<b>Gum</b>															
Sawlog	85	98	15	12	2,610	0.9	1	0.7	0.103	0.079	17.4	1.01	17.0	30.5	
Topwood	0	42	0	0	1,200	0.0	0	0.3	0.0	0.000	8.0	0.00	0.0	0.0	
<b>Group Total</b>	<b>85</b>	<b>140</b>	<b>15</b>	<b>12</b>	<b>3,810</b>	<b>0.9</b>	<b>1</b>	<b>0.9</b>	<b>0.103</b>	<b>0.079</b>	<b>25.4</b>	<b>1.01</b>	<b>17.0</b>	<b>30.5</b>	
<b>Hardwood Pulp</b>															
Pulpwood	3,930	1,575	0	0	40,804	14.3	26	10.5	0.000	0.000	272.0	0.00	9.7	35.2	
<b>Group Total</b>	<b>3,930</b>	<b>1,575</b>	<b>0</b>	<b>0</b>	<b>40,804</b>	<b>14.3</b>	<b>26</b>	<b>10.5</b>	<b>0.000</b>	<b>0.000</b>	<b>272.0</b>	<b>0.00</b>	<b>9.7</b>	<b>35.2</b>	

Wednesday, October 14, 2009
 LandMark Spatial Solutions
Page 1 of 5

## HMS Reports

To close any reports or tabs simply click the x on the far right of the of the report window. You may also click on any available tab to view other open reports or settings dialog boxes.

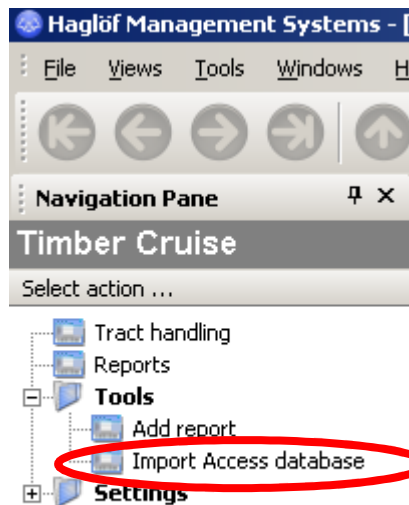


Active tabs

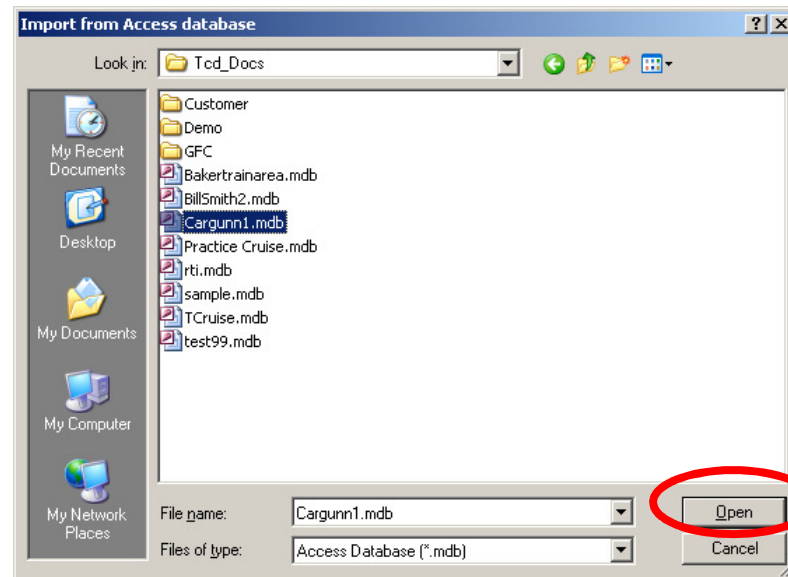
Close and scroll buttons

## Importing Existing LandMark Export Access Databases

To import any of your previous Access databases from TCruise that used the LandMark Export Module, simply select Tools from the Navigation pane and choose Import Access database.



Next, navigate to the location of the existing Access database. (Note- this is usually in your My Documents\TCruisePC\Tcd\_Docs folder.) Select the mdb file and press Open to import and convert the database to the HMS SQL format.





## Custom HMS Reports

Customized reports are available to customers who have special reporting needs. It is often most cost effective to build off of existing HMS reports to prevent rebuilding the entire report to replace a few fields or columns. We recommend users desiring customizations to submit example reports and a TCruise tcd file for testing purposes. Fees will be determined based on our programmer's hourly rate. Some users who have experience with SQL and/or Crystal Reports may also be able to build their own reports. The result will be a new rpt file that can be pasted into the HMS reports folder and then accessed in the reports window.